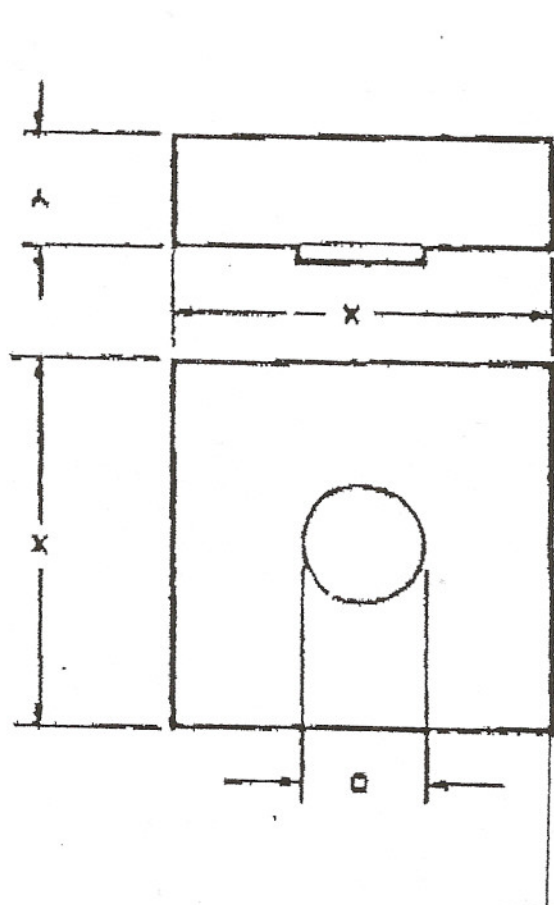




# Sierra Components, Inc.

2222 Park Place Building 3 Suite E • Minden, Nevada 89423  
Phone: 775.783.4940 Fax: 775.783.4947

Chip back potential is the level which bulk silicon is maintained by on-chip connection, or it is the level to which the chip back must be connected when specifically stated below. If no potential is given the chip back should be isolated.



**Topside Metal:** Al

**Backside Metal:** Si

**Backside Potential:**

**Mask Ref.:**

**Bond Pads:**

**APPROVED BY:**

**DIE SIZE :** .015" x .015"

**DATE:** 7/12/05

**MFG:** Hewlett Packard

**THICKNESS:**

**P/N:** HP5082-0012